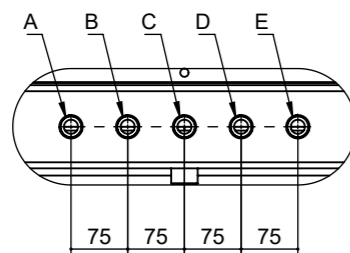


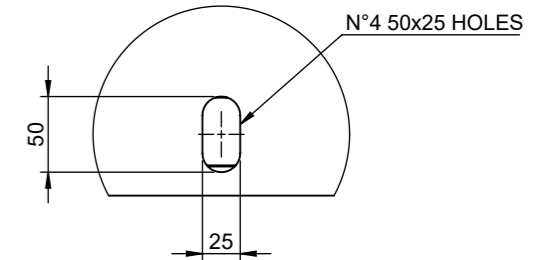
WARM AIR OUTLET

COLD AIR INLET

**B DETAIL
SCALE 1 : 10**



**A DETAIL
SCALE 1 : 5**



APPROX. WEIGHT: 2500 Kg

- 1 - GAS INLET - DN50 PN16
- 2 - GAS OUTLET - DN20 PN40
- A - PURGE INLET - Rp 1/2"
- B - PURGE OUTLET - Rp 1/2"
- C - CONDENSATE DRAIN SUCTION - Rp 1/2"
- D - CONDENSATE DRAIN DISCHARGE - Rp 1/2"
- E - OIL DRAIN - Rp 1/2"
- F - VENT - Rp 3/4"
- K - INSTRUMENT AIR - Rp 1/2"

NOTES:

1) Concrete baseplate has to be flat with planarity tolerance:

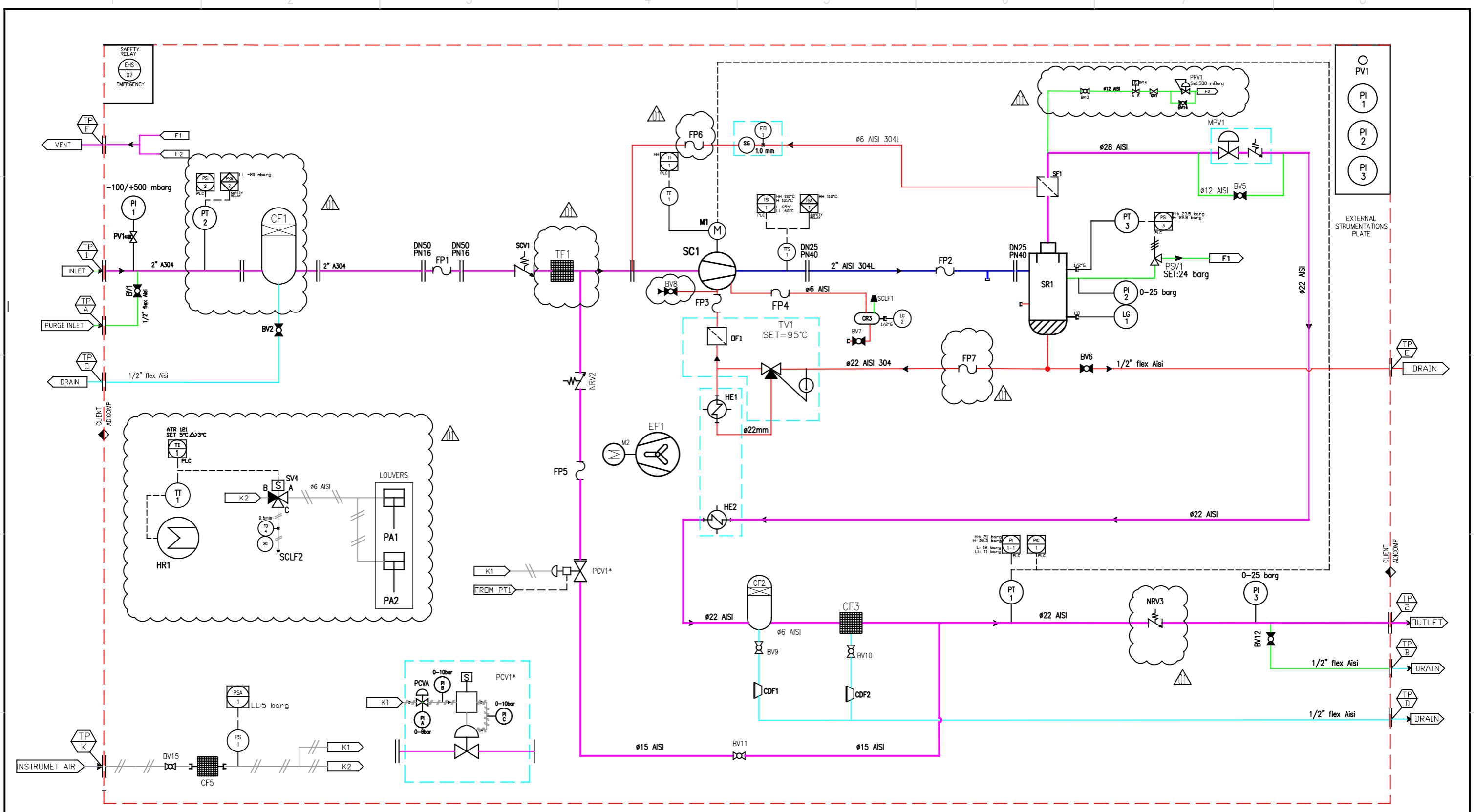
distance between control points	1 m	2 m	4 m
tolerance	±4 mm	±5 mm	±6 mm

dimensioned only for static load;

2) Baseplate roughness shall be 1,5 - 3 mm;

3) Compressor shall be fixed on the floor with expansion or chemical anchor bolts with diameter 2 mm less than fixing feet holes;

01	13/06/2023	As built	Ca.C.
Rev.	Date	Description	Drawn
adcomp		DESCRIPTION A-VG11162 UVG30-20.5WG-INV (WP-SF-BV-CM-BY2-PL-PB) Ex	Foglio1 DRAWING CODE ADI90601
Scale	1:30	Date	12/08/2022
TOLERANCES:		Linear dimensions:	Angle (UNI 2768/1)
Reference	0-15	>15-30	>30-90
Metal	±0.1	±0.3	±0.5
Plastic	±0.3	±0.5	±0.8
Sheet:	1/1	Drawing is ADICOMP property. Reproduction or transmission is not allowed in any form without ADICOMP authorisation	



**LEGENDA LINEE
LINE LEGEND**

	LINEA PNEUMATICA PNEUMATIC LINE		TUBI DI PROCESSO PRINCIPALE PRINCIPAL PROCES PIPES
	CAPILLARE CAPILLARY PIPES		TUBO DI PROCESSO DI RISERVA SECONDARY PROCES PIPES
	ELETTRICA ELECTRIC LINE		TUBI CIRCUITO OLIO CIRCUIT OIL PIPES
	SOFTWARE SOFTWARE LINE		TUBI CIRCUITO CONDENSA CONDENSATE CIRCUIT PIPES
	CONFINI IMPIANTO ADICOMP ADICOMP EQUIPMENT BORDER		TUBI CIRCUITO ACQUA WATER CIRCUIT PIPES
	TUBI CIRCUITO GAS/OLIO CIRCUIT GAS/OIL PIPES		TUBO TRACCIATO TRACED PIPE
			TUBO COIBENTATO INSULATED PIPE

TERMINATION POINT TABLE

METHANE	DRAIN PLATE					VENT	INST. AIR
DN50 PN16	A	B	C	D	E	F	K
1	1/2"	1/2"	1/2"	1/2"	1/2"	Rp 3/4"	Rp 1/2"
2	1/2"	1/2"	1/2"	1/2"	1/2"		

INDICATOR RANGE

PI1: -100/+500 mbarg
PI2: 0-25 barg
PI3: 0-25 barg

01	09/06/2023	As Built - Updated where	GP	D.F.	PDF
00	02/08/2022	First emission	GP	D.F.	PDF
Rev.	Date	Description	BY	Checked	Approved
ADICOMP reserves all rights on this document that cannot be reproduced in any part without its written consent.					
		DESCRIPTION: (DESIGN BASED ON ADI2374) A-VG11162; Comm. 1586 UVG30-20.5WG-INV (WP-SF-BV-CM-BY2-PL-PB) Ex	DRAFT CODE ADI11300		Rev 01